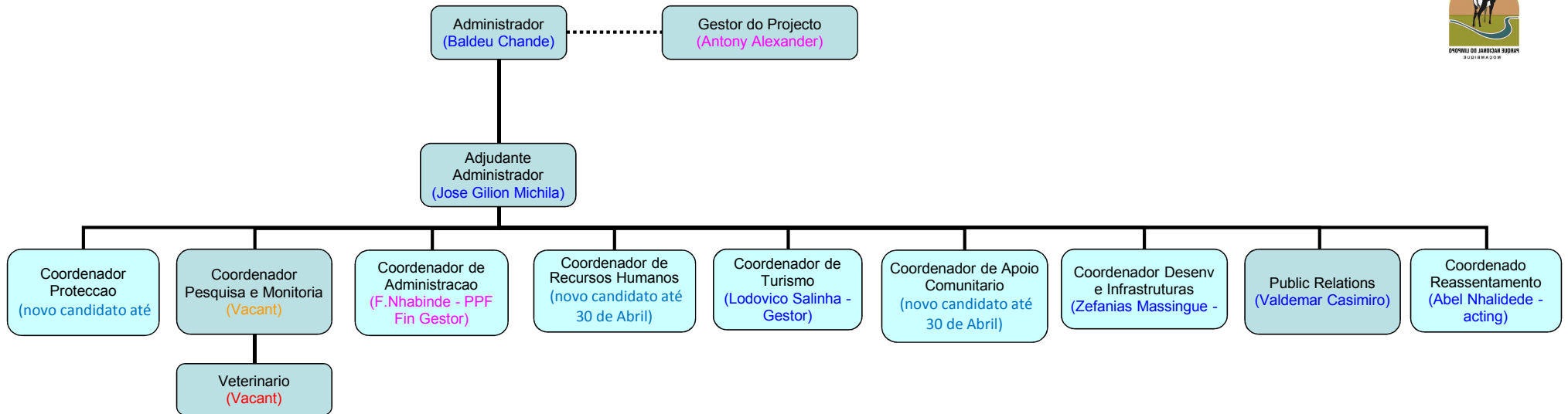


PROGRAMA DE PNL

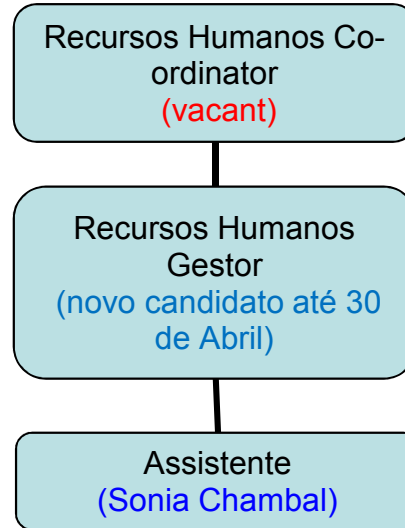


Department:	TOTAL	PNL	Infra	Resettle	Community	Admin	Protect	HR	Tourism
External Staff:	9	1	2	1	2	2	1	0	0
Staff Required:	172	5	12	3	10	12	116	3	11
Staff Secured:	165	3	11	2	9	12	116	2	10
Staff Vacancy:	7	2	1	1	1	0	0	1	1

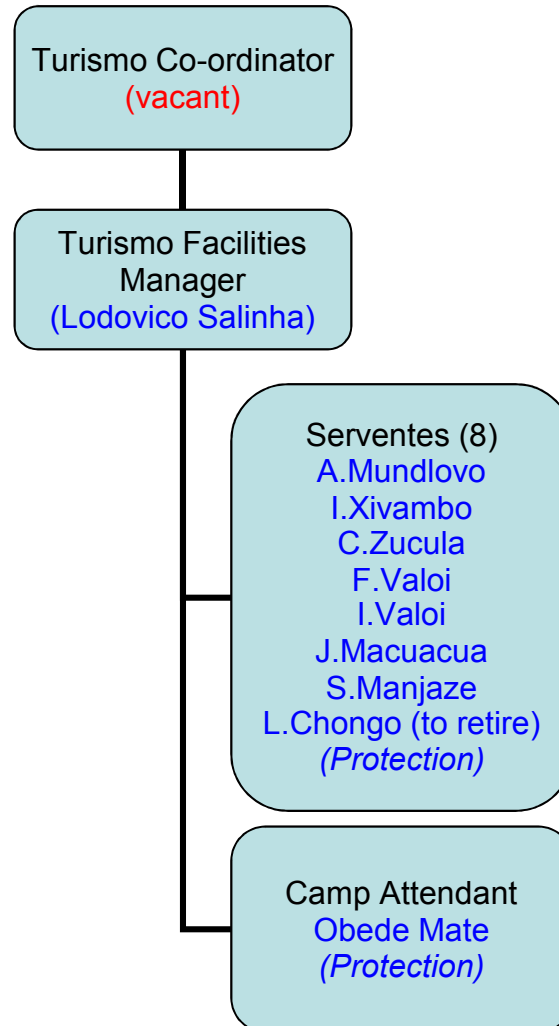
LEGEND
Internal
External
Vacancy

PROGRAMA DE HR

Department:	HR
External Staff:	0
Staff Required:	3
Staff Secured:	2
Staff Vacancy:	1

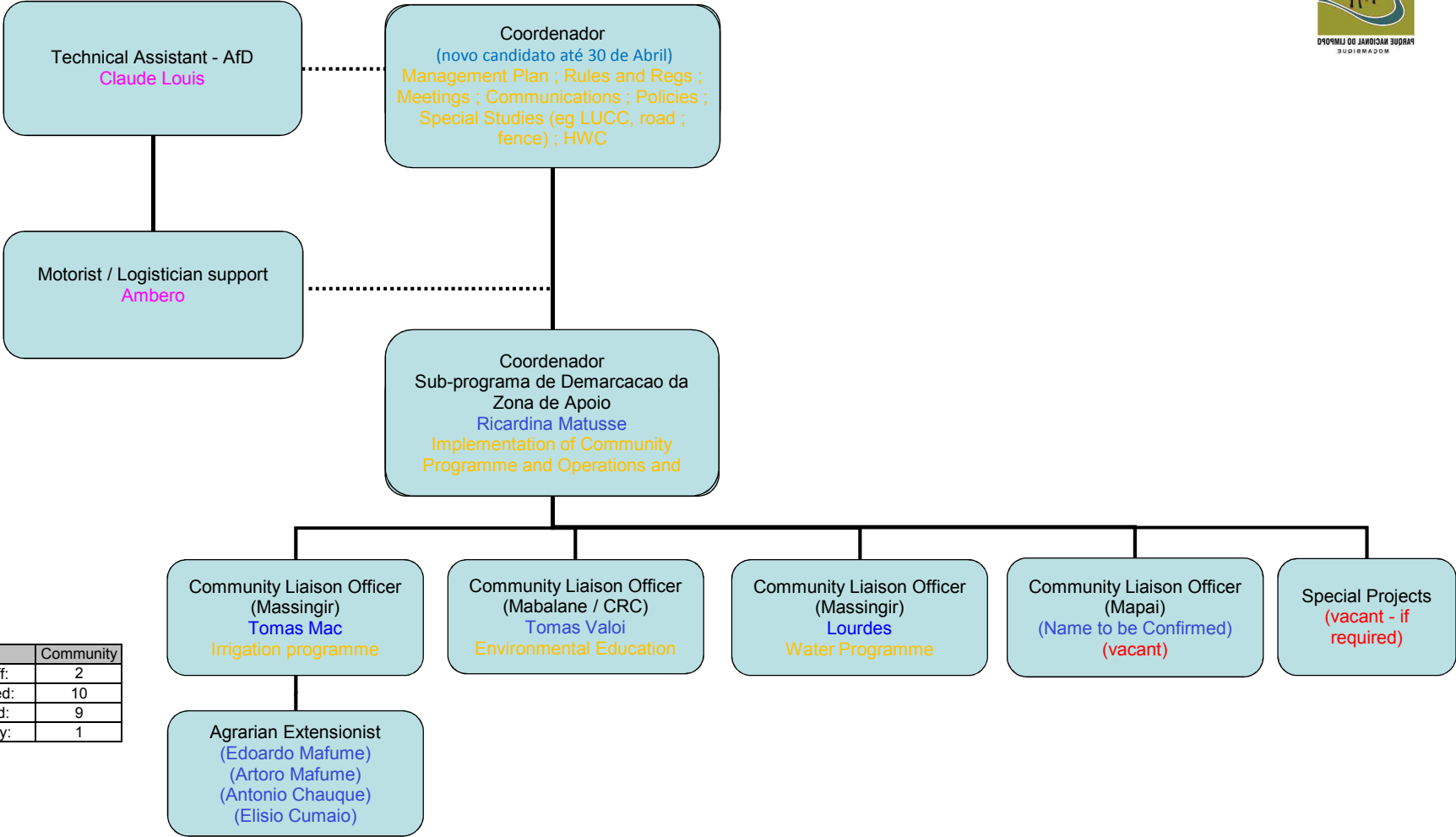


PROGRAMA DE TURISMO



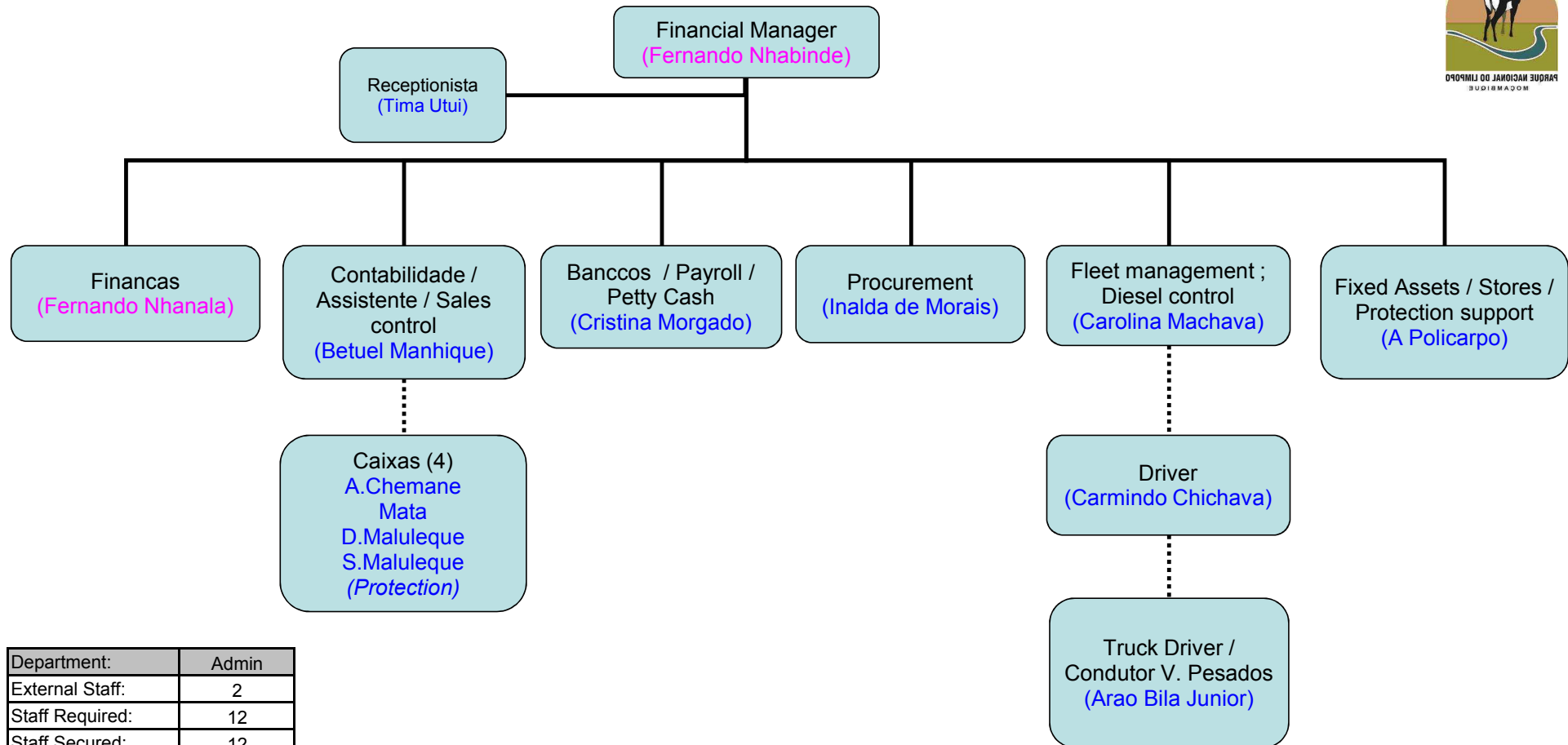
Department:	Tourism
External Staff:	0
Staff Required:	11
Staff Secured:	10
Staff Vacancy:	1

PROGRAMA DE APOIO COMUNITARIO



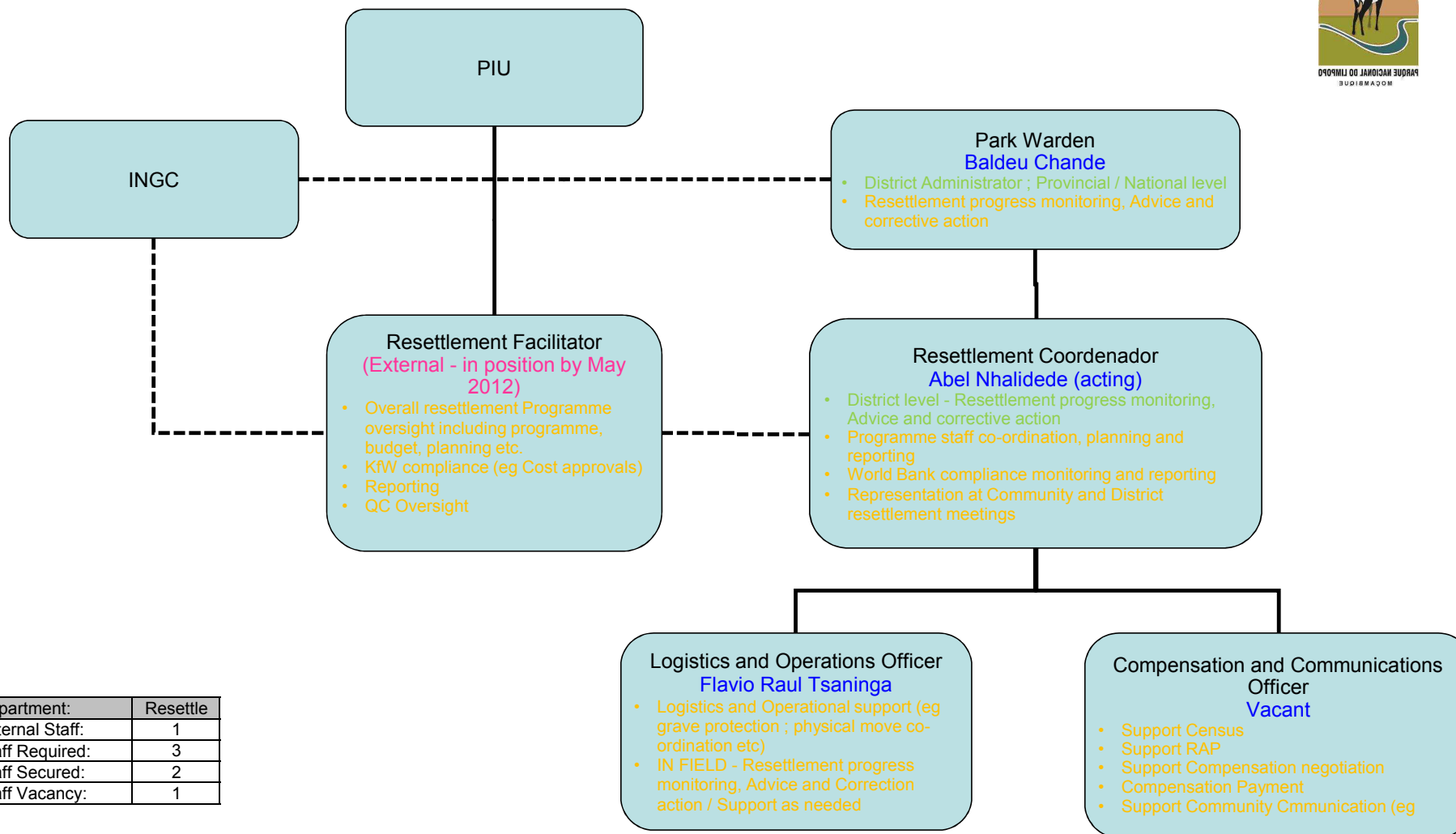
Department:	Community
External Staff:	2
Staff Required:	10
Staff Secured:	9
Staff Vacancy:	1

PROGRAMA DE ADMINISTRACAO



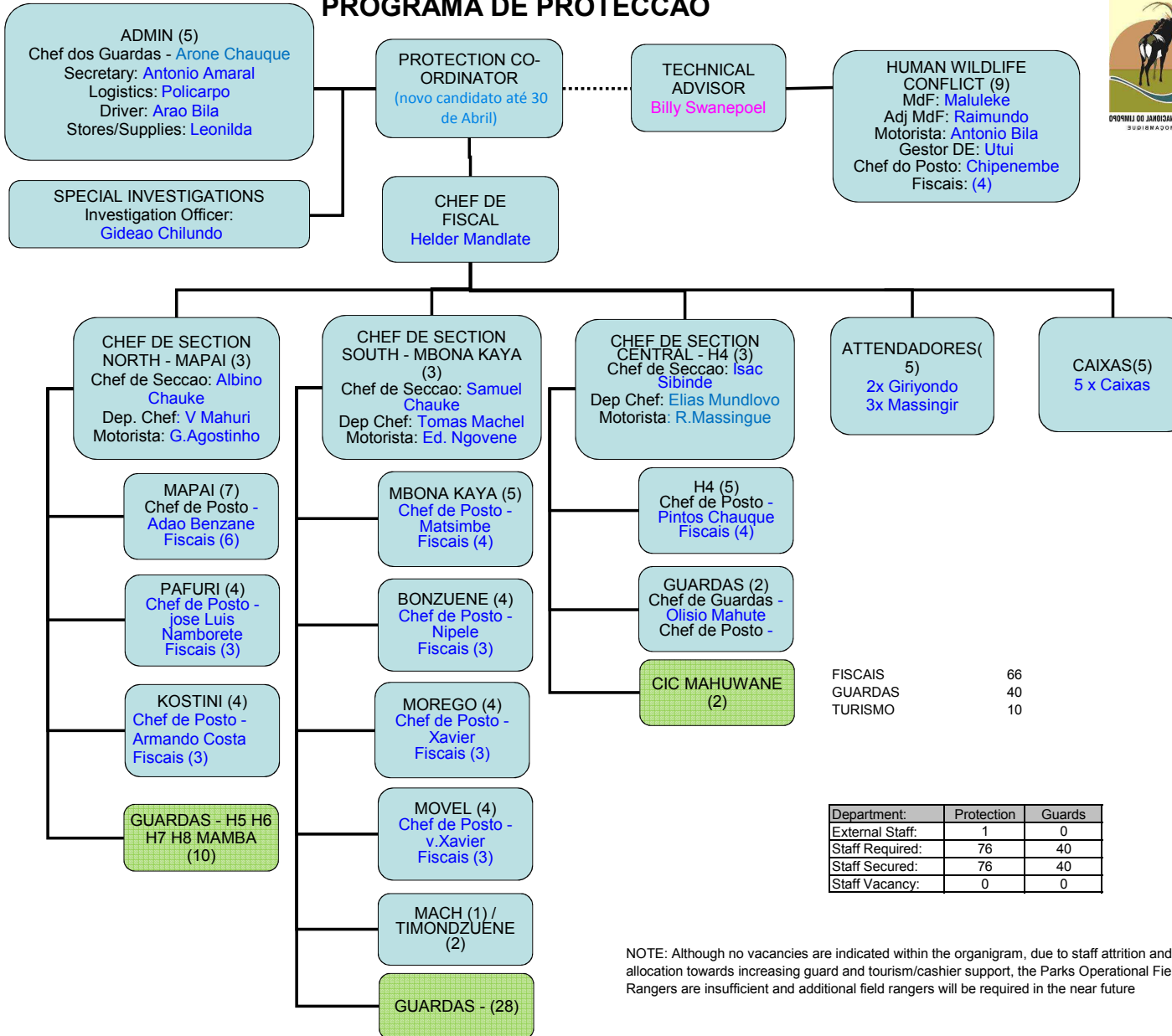
Department:	Admin
External Staff:	2
Staff Required:	12
Staff Secured:	12
Staff Vacancy:	0

PNL RESETTLEMENT DEPARTMENT



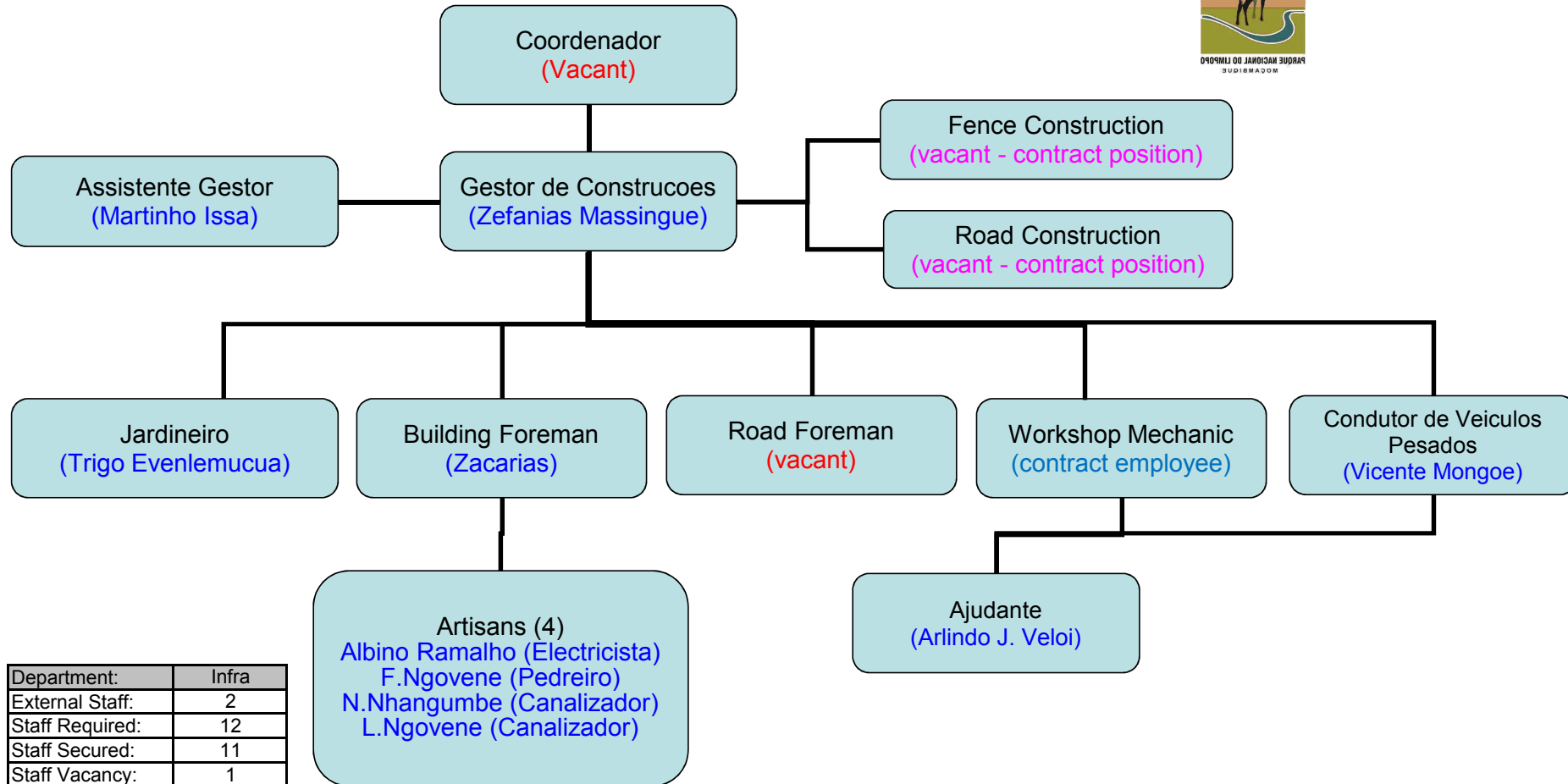
Department:	Resettle
External Staff:	1
Staff Required:	3
Staff Secured:	2
Staff Vacancy:	1

PROGRAMA DE PROTECCAO



NOTE: Although no vacancies are indicated within the organigram, due to staff attrition and staff allocation towards increasing guard and tourism/cashier support, the Parks Operational Field Rangers are insufficient and additional field rangers will be required in the near future

PROGRAMA DE DESEN. INFRAESTRUTURAS



Department:	Infra
External Staff:	2
Staff Required:	12
Staff Secured:	11
Staff Vacancy:	1